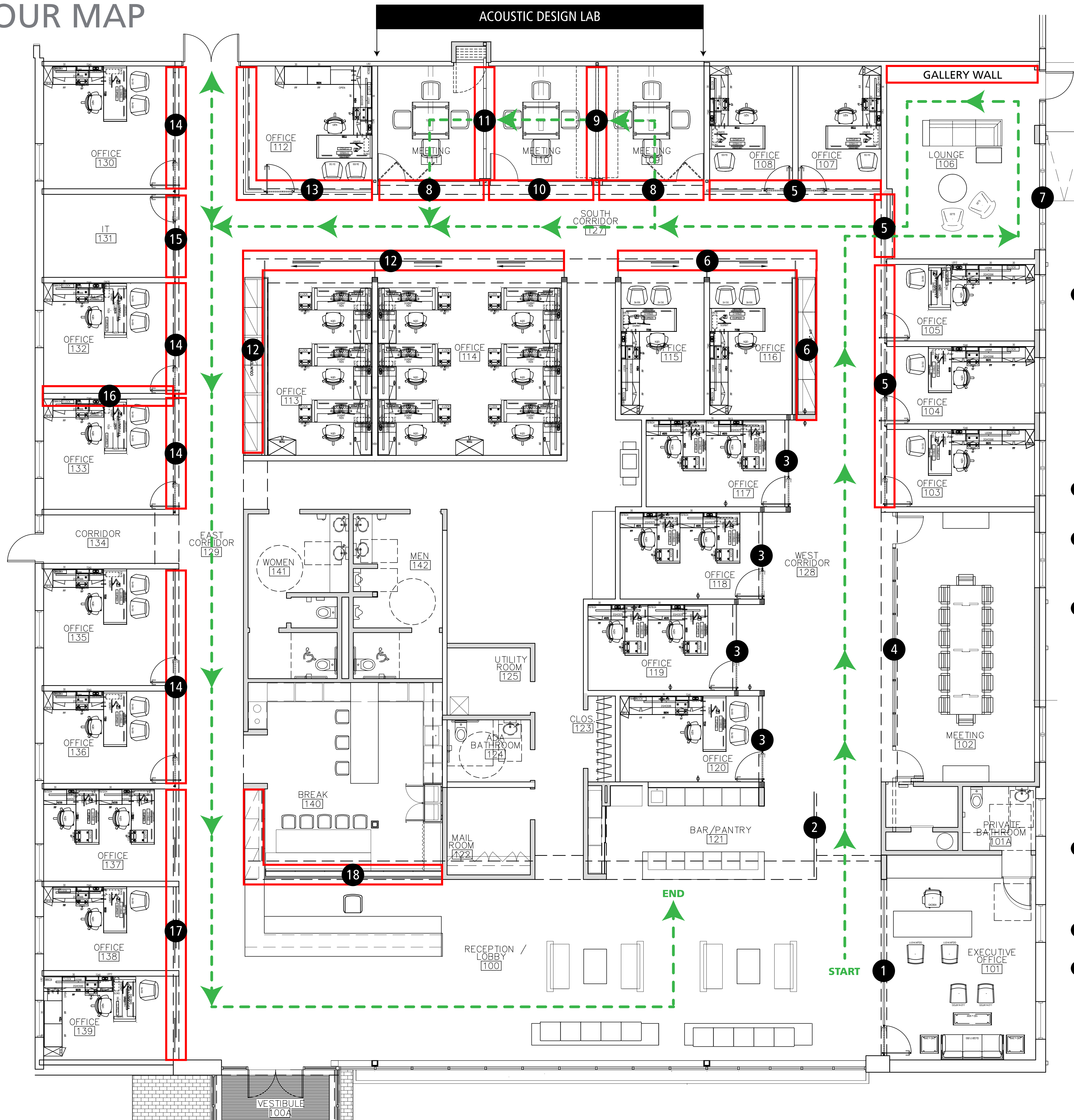


# SHOWROOM TOUR MAP

- 12** Klein Telescopic Biparting Glass Doors
- 13** Moodwall P4
  - Fixed + swing glass door
  - Double-glazed 1/2" – 3/8"
  - 45 STC
- 14** Modernus Lama
  - Fixed glass + wood swing doors
  - Single glazed
  - 1/2" Monolithic glass
  - Applied mullions
  - STC 39
- 15** Modernus Lama
  - Fixed + glass swing door
  - Double-glazed 1/2"-3/8" Laminated design
  - 49 STC
- 16** Modernus Seven Blind
  - Solid demountable system
  - Power and data management
  - Custom finish panels
  - 55 dB XX STC?
- 17** Modernus Lama
  - Sliding, single-glazed
  - 1/2" Monolithic glass
  - Applied mullions
- 18** Dorma Fixed Glass

ARCHITECT: SBLM ARCHITECTS  
 GENERAL CONTRACTOR: TOMMAC CONSTRUCTION  
 ENGINEER: HUGHES ENGINEERING  
 CUSTOM MILLWORK: CUSTOM CREATIONS INC.

OTHER:  
 – GLASS and MAGNETIC BOARDS: GGI (Except for PK-30 and MOD-ERNFOLD systems)  
 – PULLS: PBA AND FSB  
 – ACOUSTIC CEILING: CERTAINTEED  
 – OFFICE FURNITURE: KNOLL REFF



- 11** Encore 56 STC
- 10** Acousti-Clear Demountable
  - 45 STC
- 9** Skyfold Classic 60 STC
- 8** Acousti-Clear Operable
  - 45 STC
- 7** Renlita S-3000 Foldaway Two-Leaf Door
  - Utilizes counterweight balanced technology to ensure smooth operation and durability
  - Folds along a central hinge and rises vertically to stack under the header
  - Door system is suitable for opening sizes up to 90 ft. wide and 30 ft. tall
  - Designed to resist a minimum wind loading of 10 psf
  - Accepts a wide range of cladding and/or glazing materials and come in many colors
- 6** DORMA MUTO
  - Telescopic glass walls
- 5** PK-30 Glass Wall System (swing and sliding door)
  - Swing with Rockwood handles
- 4** Modernfold ComfortDrive Automated Self-Driving Panels
  - Fully automatic operation with a push of a button using the Smart Control Pad
  - Panels individually programmable for custom configurations
  - Last panel equipped with an electromechanical lock to prevent unauthorized operation
  - Up to 30 panels per partition system, with up to 164 ft. of track
  - Maximum 12 ft. height, 4 ft. width per panel
  - Maximum panel weight = 325 lbs. (147 kg)
  - UL® 325 safety-tested and certified
- 3** Moodwall P2 Swing Doors
  - 1/2" tempered, low iron
  - 32 STC
  - Custom mullion (Office 120)
- 2** Dorma Fixed Glass
- 1** PK-30 Glass Wall System
  - Swing and fixed panels
  - 3/8" Clear tempered low iron glass
  - Black satin anodized frame finish
  - FSB full mortise lockset